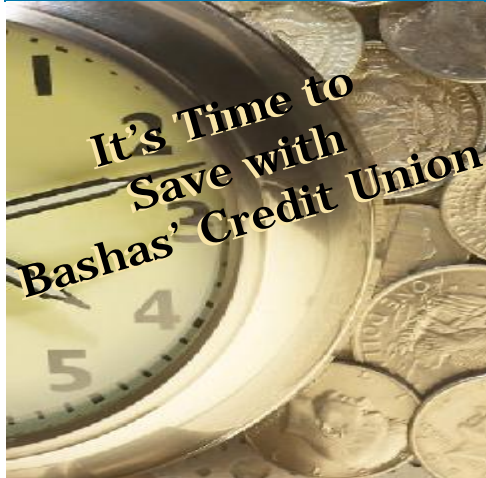


The CU Connection



Jan. Feb. & Mar. 2008 Edition

Your guide to all that's new at BAFCU



Every New Year brings our new year's resolutions. Don't forget to make some Financial Fitness resolutions along with those physical fitness ones. These can include goals to Save Money, Get out of Debt, Reduce your Taxes, Save for your Retirement or Education. Your Credit Union can help with every one of these goals.

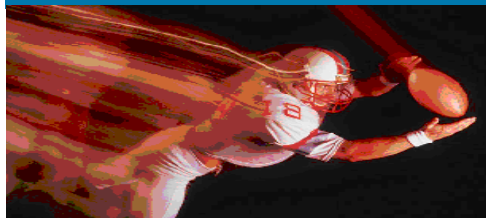
Save Money - open a Christmas Club Account for next year or a secondary savings account for emergencies.

Get out of Debt - consider a Home Equity Line of Credit or a Signature Loan to pay off high interest credit cards and/or consolidate your bills.

Reduce your Taxes - start your Roth, Traditional, or Education IRA . (Consult your tax advisor to see what will work best for you)

Save for your Retirement or Education - IRA's and Certificate of Deposit are both excellent option to save for your retirement, but if you like to keep your funds liquid, watch for more information forthcoming on our new Money Market Accounts.

Whatever your resolution is, let your Credit Union make **2008** great!



ARE YOU READY FOR THE SUPERBOWL?

Here is your Credit Union's winning line-up:

CEO/Manager : Gloria J. Mundy
Operations Manager: Brenda Roberts
Accountant/IT: Joe Quihuis
Accountant: Lesley Peterson
Marketing: Marlea Knighton
Admin. Assistant: Wendy McCalister
Debit Card Dept.: Marisela Arroyo-Carlos

LOAN DEPARTMENT

Sr. Loan Officer: Connie Cazez
Loan Officer: Carrie Taft
Loan Processor: Monica Anaya-Garcia

MEMBER SERVICE REPRESENTATIVES

Supervisor: Alma Chavez-Gonzalez
Member Service Rep - Brandy Valenzuela
Member Service Rep - Bobby Leonard
Member Service Rep - Angie Montelongo

PHOENIX BRANCH

Branch Mgr/Loan Officer: Anita Ortega
Member Service Rep: Josie Ramirez

Checking Accounts with Choices!



You now have a choice with your credit union checking accounts. Each account has been designed to offer additional services to complement your individual needs and style.

- g New Start Checking Account
Designed for the newest members from age 16 up
- g Basic Checking Account
Designed for the member that occasionally uses a checking account
- g Classic Checking Account
Designed for the more advanced member that uses a checking account regularly and may want to try "My Bill Pay" or on-line products.
- g Premier Checking Account
Designed for the computer savvy member that uses BOLTS and will want to sign up for "My Bill Pay" right away!

Call a Member Service Rep to get more information as to which type of account will best serve your needs at (480) 831-0098 or (800) 686-2328.

My Bill Pay . . . Bashas' Credit Union's newest addition!

Announcing the birth of our newest service "My Bill Pay." Watch for information in your checking account statements, as the due date draws closer. We are expecting our little bundle to arrive sometime before March 1st, 2008. We will be sending your announcement with your checking account statements, on the website, on BOLTS, and the eBuzz. Call the Credit Union for more information.



If Santa forgot to bring you what you really wanted....



come to the credit union to get pre-approved and we will take care of your first payment!

*First payment offer is valid 01/01/08-02/29/08. First payment will be made on first month upon vehicle purchase. Not to exceed \$400. No cash advances. Offer not valid for previous Enterprise purchases. Financing must be done at BAFCU. Not valid with any other Enterprise car sale offer. Contact the credit union with more questions at (480) 831-0098 or (800) 686-2328.

Let Bashas' Credit Union and Enterprise help out with your first loan payment on us, up to \$400.00*
Plus great auto rates starting at 5.99% APR!
This offer is valid from Jan. 1st - Feb. 29th only at Enterprise Car Sales locations.

Come get pre-approved at the Credit Union then stop by your closest Enterprise Car Sales location or log on to www.bafcu.com/links.shtml to see a great selection of competitively priced vehicles.



Bashas' Associates FCU

Tempe Branch
735 E. Guadalupe Road
Tempe, AZ 85283
Phoenix Branch
1940 W. Indian School Rd
Phoenix, AZ 85015
(480) 831-0098 * (800) 686-2328
BART (877) 799-0027
Fax - Loans (480) 831-1438
Fax - Tellers (480) 831-1512
Phx Fax - (602) 265-3421
www.bafcu.com
Once a Member, Always a Member.

Board of Directors/Supervisory Committee

Stephan Sciacca-President
Chris Kredlo-Vice President
Gloria J. Mundy-Treas/CEO/Mgr
Janice Hill-Secretary
Karen Giroux-Director
Elva Vivas-Director
Al Mendoza-Director
Steven Boynton-Director
Tony Ching-Director
Supervisory Committee
Tony Ching, Shelley Regoli, Noemi Gonzalez

Loans -

Vehicles -
(New & Used) 0-48 mths
New Rates low as 6.25% APR*
Contact CU for additional rates

VISA Credit Cards-
VISA Platinum
8.99% APR*
VISA Classic
11.99% APR*
VISA Share Secured
14.99% APR*

Signature loans
Start at 8.00% APR*

Recreational loans
Start at 7.49% APR*

* Annual Percentage Rate. Rates are determined by Risk Based Lending which is based on your Fair Isaac Score reported by the Credit Bureau Agencies.

Inactive accounts Dormant fee

If there is no activity for two years on your account, you will be charged a dormant account fee of \$2.00 per quarter. When the balance drops to less than \$25, the account will be closed and the money retained by the Credit Union. To avoid dormant account fee charges or loss of funds, simply make a deposit, withdrawal or transfer to the account. If you have any questions, please contact our office.
BAFCU Connection is published quarterly for BAFCU member/owners and is designed to provide informative materials of interest to our readers. It is distributed with the understanding that it does not constitute legal, accounting or other professional advice. Legal, accounting, or other expert assistance should be sought from professionals in those fields. Information in this publication is current as of the date this issue was printed. Products, services and their terms may be changed by the CU at any time.



Free Credit Reports for Consumers

The Fair and Accurate Credit Transactions Act (FACT Act) will help reduce identity theft according to the Federal Trade Commission. One provision requires the three major credit-reporting agencies to provide consumers with a free copy of their own credit report. Monitoring your credit is an effective way to verify that the information being reported about you is accurate, and as a tool to fight identity theft.

Measures to help consumers that have been victimized are:

Credit reporting agencies must stop reporting allegedly fraudulent account information when a consumer establishes that he or she has been the victim of identity theft.

Creditors or businesses must provide copies of business records or fraudulent accounts or transactions related to them. This information can assist victims in proving that they are, in fact, victims.

Consumers will be allowed to report accounts affected by identity theft directly to creditors - in addition to credit reporting agencies - to prevent the spread of erroneous credit information.

Request your report at www.annualcreditreport.com or by calling (877) 322-8228.

Get your statements by email!

Sign up for on-line statements and receive your statements and all newsletters with the click of your mouse. Sign up for eStatements on your account page of BOLTS.

Don't use BOLTS? Go to www.bafcu.com, visit the applications page and download the application. Then fill it out and fax it to (480) 831-1512. Call us at (480) 831-0098 or (800) 686-2328 if you have questions.



Staff Member of the Year for 2006 and 2007

Come by the Credit Union and congratulate Angie Montelongo for receiving the Staff Member of the Year Award for the year 2006. Then tell Carrie Taft, "Great Job" on receiving Staff Member of the Year for 2007. These members are chosen by their peers for their excellence in teamwork and service to our members.

A raffle was held on Dec. 14th to give away 4 tickets to any Celebrity Theater Concert (promoted by Celebrity Theater) during the year 2008 on behalf of the Children's Miracle Network. This raffle raised close to \$750.00. For the year 2007 we have donated over \$8,000.00 to the CMN. Thank you to everyone that purchased tickets, we appreciate your continuous support.

Geraldeen Curley from Store #42 wins the CMN Raffle



Take some equity from your home with a Home Equity Line of Credit available at your Credit Union!

Rates are:

6.75 % APR for 80% LT V
(Prime minus .50)

7.00 % APR for 90% LT V
(Prime minus .25)

Prime rate is determined by the Wall Street Journal Prime Rate and are subject to change. Rates quoted in this newsletter were based on prime dated 12/15/07.